



Medium Static Pressure Duct Standard



Model: ARXG22KMLB/ARXG24KMLA/ARXG30KMLA/ARXG36KMLA/ARXG45KMLA ARXG36KMLA [3-phase]/ARXG45KMLA [3-phase]

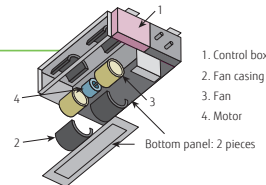


Specifications

Model name	Indoor unit		ARXG22KMLB	ARXG24KMLA	ARXG30KMLA	ARXG36KMLA	ARXG45KMLA	ARXG36KMLA	ARXG45KMLA
	Outdoor unit		AOYG22KBTB	AOYG24KBTB	AOYG30KBTB	AOYG36KBTB	AOYG45KBTB	AOYG36KRTA	AOYG45KRTA
Power Source			Single phase, ~230 V, 50 Hz					3-phase, ~400 V, 50 Hz	
Capacity	Cooling	kW	6.0 (0.9-6.7)	6.8 (0.9-8.0)	8.5 (2.3-10.0)	9.5 (2.8-11.2)	12.1 (4.0-13.0)	9.5 (2.8-11.2)	12.1 (4.0-13.0)
	Heating	kW	7.0 (0.9-8.0)	7.5 (0.9-9.1)	10.0 (2.7-11.2)	10.8 (2.7-12.3)	13.5 (4.2-15.2)	10.8 (2.7-12.3)	13.5 (4.2-15.2)
Input Power	Cooling/Heating	kW	1.78/1.87	2.14/1.97	2.65/2.63	2.97/2.88	4.27/3.84	2.97/2.88	4.27/3.84
	Cooling	kW	3.37	3.18	3.21	3.20	2.87	3.20	2.87
EER	Cooling		3.74	3.80	3.80	3.75	3.52	3.75	3.52
	Heating	W/W	3.74	3.80	3.80	3.75	3.52	3.75	3.52
Pdesign	Cooling/Heating (-10°C)	kW	6.0/4.8	6.8/6.0	8.5/8.0	9.5/8.7	-	9.5/8.7	-
	Cooling	W/W	6.10	6.20	6.23	6.10	-	6.10	-
SEER	Cooling		4.10	4.10	4.00	4.00	-	4.00	-
	Heating		-	-	-	-	-	-	-
Energy Efficiency Class	Cooling		A++	A+	A++	A++	-	A++	-
	Heating		A+	A+	A+	A+	-	A+	-
Max. Operating Current	Cooling/Heating	A	12.6/12.6	13.6/13.6	22.6/22.6	22.6/22.6	28.5/28.5	10.5/10.5	14.0/14.0
	Cooling	kWh/a	344	384	477	545	-	545	-
Annual Energy Consumption	Cooling	kWh/a	1.637	2.045	2.797	3.044	-	3.044	-
	Heating		2.1	2.5	2.5	3.0	4.0	3.0	4.0
Moisture Removal	Indoor (Cooling)	l/h	31/29/27/25	31/29/27/25	39/35/30/26	39/35/30/26	42/38/32/28	39/35/30/26	42/38/32/28
	Indoor (Heating)	l/h	31/29/27/25	31/29/27/25	42/35/30/26	42/35/30/26	42/38/32/28	42/35/30/26	42/38/32/28
Sound Pressure Level	Indoor (Cooling/Heating)	dB(A)	51/51	53/54	53/55	55/55	57/57	55/55	57/57
	Outdoor (Cooling/Heating)		60/62	60/62	65/69	65/70	68/70	65/70	68/70
Sound Power Level	Indoor (Cooling/Heating)	High	63/63	65/66	68/69	70/70	71/71	70/70	71/71
	Outdoor (Cooling/Heating)		1,100/2,240	1,100/2,700	1,900/3,750	1,900/3,750	2,100/4,450	1,900/3,750	2,100/4,450
Airflow Rate	Indoor/Outdoor (Cooling)	m ³ /h	1,100/1,960	1,100/2,700	2,100/3,750	2,100/3,750	2,100/4,450	2,100/3,750	2,100/4,450
	Indoor/Outdoor (Heating)		30 to 150 (35)	30 to 150 (35)	30 to 150 (47)	30 to 150 (47)	30 to 150 (60)	30 to 150 (47)	30 to 150 (60)
Static pressure range (Standard)	Indoor	Pa	270 × 115 × 700	270 × 115 × 700	270 × 115 × 700	270 × 115 × 700	270 × 115 × 700	270 × 115 × 700	270 × 115 × 700
	Outdoor		632 × 399 × 290	716 × 820 × 315	788 × 940 × 320	788 × 940 × 320	988 × 940 × 320	788 × 940 × 320	988 × 940 × 320
Net Dimensions H × W × D	Indoor	mm	35 (77)	35 (77)	38 (84)	38 (84)	39 (86)	38 (84)	39 (86)
	Outdoor	kg (lbs)	38 (84)	42 (93)	52 (115)	52 (115)	67 (148)	53 (117)	67 (148)
Weight	Indoor	mm	6.35/12.70	6.35/12.70	9.52/15.88	9.52/15.88	9.52/15.88	9.52/15.88	9.52/15.88
	Outdoor	kg (lbs)	35 (77)	35 (77)	38 (84)	38 (84)	39 (86)	38 (84)	39 (86)
Connection Pipe Diameter (Liquid/Gas)	Indoor	mm	35.7/38.1	35.7/38.1	35.7/38.1	35.7/38.1	35.7/38.1	35.7/38.1	35.7/38.1
	Outdoor		25	25	30	30	30	30	30
Max. Pipe Length (Pre-Charge)	Cooling	m	30 (20)	30 (20)	50 (30)	50 (30)	50 (30)	50 (30)	50 (30)
	Heating		25	25	30	30	30	30	30
Operating Range	Cooling	°CDB	-15 to 46	-15 to 46	-15 to 46	-15 to 46	-15 to 46	-15 to 46	-15 to 46
	Heating		-15 to 24	-15 to 24	-15 to 24	-15 to 24	-15 to 24	-15 to 24	-15 to 24
Refrigerant Type (Global Warming Potential)	Charge	kg (CO2eq-1)	R32 (675)	R32 (675)	R32 (675)	R32 (675)	R32 (675)	R32 (675)	R32 (675)
			1.25 (0.844)	1.25 (0.844)	1.90 (1.283)	1.90 (1.283)	2.70 (1.823)	1.90 (1.283)	2.70 (1.823)

Easy maintenance

Structural improvement is attained by making the bottom panel in two pieces—front and rear. The internal fan casing is also manufactured in two pieces—upper and lower. As a result, the motor and fan can be easily accessed and maintained by removing the rear panel and the lower casing while leaving the main chassis in place.

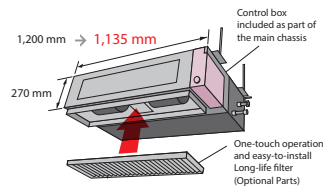


See below for case of rear-suction type

Slim & Compact Design

Indoor Unit

The slim and compact design of the indoor unit, with the control box mounted on the side, allows installation in narrow spaces.



Outdoor Unit

The outdoor units for the 45,000 BTU and 54,000 BTU models have been completely redesigned. Easier installation is achieved for this compact and lightweight outdoor unit.



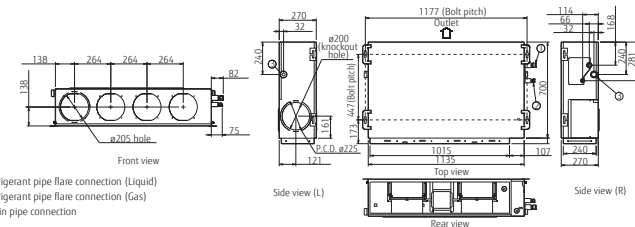
Optional parts

* For optional parts compatibility of Inesis devices, refer to the optional parts compatibility list Page C-046.

Compact wired remote controller:	UTY-RCRYZ1	External switch controller:	UTY-TERX	Network Converter for single split (DC power supply type):	UTY-VTGX
Wired remote controller (touch panel):	UTY-RLRY UTY-RNRYM UTY-RNVM	WLAN adapter:	UTY-IFSAZ1	Network Converter for single split (AC power supply type):	UTY-VTGVX
Wired remote controller:	UTY-RNRYM UTY-RNVM	Flange (Round):	FJ-RC-WIFI-1	Drain pump unit:	UTZ-PXINBA
Simple remote controller (without operation mode):	UTY-RSRY	Flange (Square):	UTD-SF04ST	Long-life filter:	UTD-LF25NA
Simple remote controller:	UTY-RSRY UTY-RSVM	IR receiver unit:	UTY-LB1VM	Silver Ion Filter:	UTD-HFND
		Remote sensor unit:	UTY-XS2X	(Outdoor unit 30/36/45/54)	
		External connect kit:	UTY-XWZXZG	External connect kit:	UTY-XWZXZ3

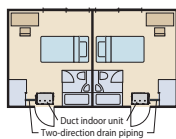
Dimensions

(Unit: mm)



- ① Refrigerant pipe flare connection (Liquid)
- ② Refrigerant pipe flare connection (Gas)
- ③ Drain pipe connection

Two-direction drain piping



Link up with a variety of Central Control System (Option)

Centralized control including facilities and equipment in addition to air conditioning is possible by linking up with MODBUS, KNX interfaces.

